

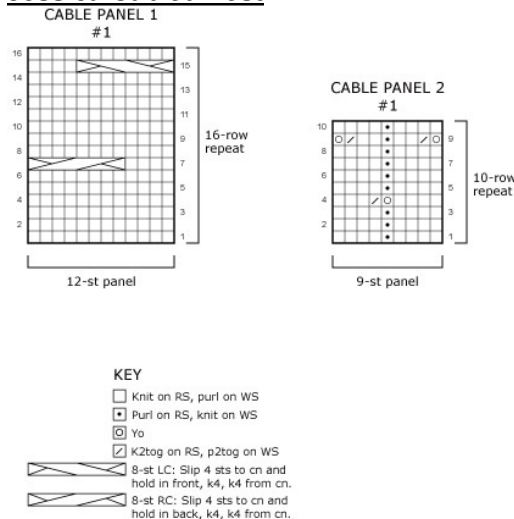
# Tahki Stacy Charles Booklets – updated 11-30-11

## Clarifications and corrections to patterns

### 2011 booklets, e-patterns and editorials

#### MOONSTRUCK, S. Charles Collezione Fall/Winter 2011

#### Jessica Cabled Vest



#### Cable Pattern 1 (panel of 12 sts)

Rows 1, 3, and 5 (RS) Knit.

Row 2 and all even number rows (WS) Purl.

Row 7 K4, 8-st RC.

Rows 9, 11, and 13 Knit.

Row 15 8-st LC, k4.

Repeat Rows 1-16 for Cable Pattern 1.

#### Cable Pattern 2 (panel of 9 sts)

*NOTE: I-cord is laced through the yo's after piece is complete.*

Rows 1, 3, 5, and 7 (RS) K4, p1, k4.

Row 2 (WS) Knit the knits and purl the purls as they face you.

Row 4 P3, p2tog, yo, p4.

Rows 6, 8 and 10 Rep Row 2.

Row 9 (RS) Yo, k2tog, k2, p1, k2, k2tog, yo.

Repeat Rows 1-10 for Cable Pattern 2.

**PLEASE NOTE:** While some of the corrections affect ALL sizes, most pertain to size Medium. Please refer to underlined copy and revised cable charts and schematics for corrections.

Bust measurement for Size Medium should be 37½"/95.5cm

#### BACK

For Medium Only: Cast on 107 sts.

#### For All Sizes

Row 1 (RS) K3 (4, 3, 4), p2 (3, 2, 3), \* work Cable Pattern 1, p2 (3, 2, 3), work Cable Pattern 2, p2 (3, 2, 3); rep from \* 2 (2, 3, 3) more times, work Cable Pattern 1, p2 (3, 2, 3), k3 (4, 3, 4). Continuing in patterns as set, inc 1 st each side every 16 rows 3 times, working inc sts into Cable Pattern – 103 (113, 128, 140) sts...

#### Shape Armholes

(RS) Inc 1 st each side every 6 rows 6 times, working inc sts into Cable Pattern – 115 (125, 140, 152) sts. Work even...

#### Shape Shoulders

(RS) \* Bind off... – 53 (55, 66, 70) sts rem.

#### Shape Shoulders and Neck

(RS) Bind off... **AT SAME TIME**, bind off center 25 (27, 34, 38) sts and work both sides separately.

At each Neck edge, bind off 4 sts once.

#### LEFT FRONT

Cast on 19 (22, 30, 34) sts.

#### Sizes Small (Medium) only:

Row 1 (RS) K3 (4), p2 (3), work Cable Pattern 1, p2 (3).

#### Sizes Large (X-Large) only:

Row 1 (RS) K3 (4), p2 (3), work Cable Pattern 1, p2 (3), work Cable Pattern 2, p2 (3).

#### All sizes:

Continuing in patterns as set, cast on 3 sts at end of next 2 (3, 2, 3) RS rows, 2 sts at end of next 11 (10, 9, 9) RS rows, then 1 st at end of next 4 (5, 5, 4) RS rows, working inc sts into Cable Pattern.

**AT SAME TIME**, inc 1 st at side edge every 16 rows 3 times – 54 (59, 62, 68) sts. Work even...

#### Shape Neck

(RS) Dec 1 st at Neck edge every 3 rows 19 (20, 19, 21) times...

#### Shape Armhole

Pm to mark start of Armhole.

(RS) Bind off 6 sts at beg of row, work to end.

(WS) Inc 1 st at Armhole edge every 3 rows 12 times, working inc sts into Cable Pattern when possible...

#### FINISHING

#### Front and Bottom Edging

With RS facing and longer circular needle, pick up and knit 435 (455, 495, 525) sts evenly...

## 2011 booklets, e-patterns and editorials

### POTPOURRI, Tahki Yarns Fall/Winter 2011 Collection

#### #8 Lavender Pullover

BACK, Change to larger needles... Inc 1 st each side this row and every 12<sup>th</sup> row 4 times more...

### DUETS, Filatura Di Crosa Nirvana & Superior Leaflet

#3 Reunited Shrug, Materials should be 3 (3, 4) balls each of Nirvana and Superior

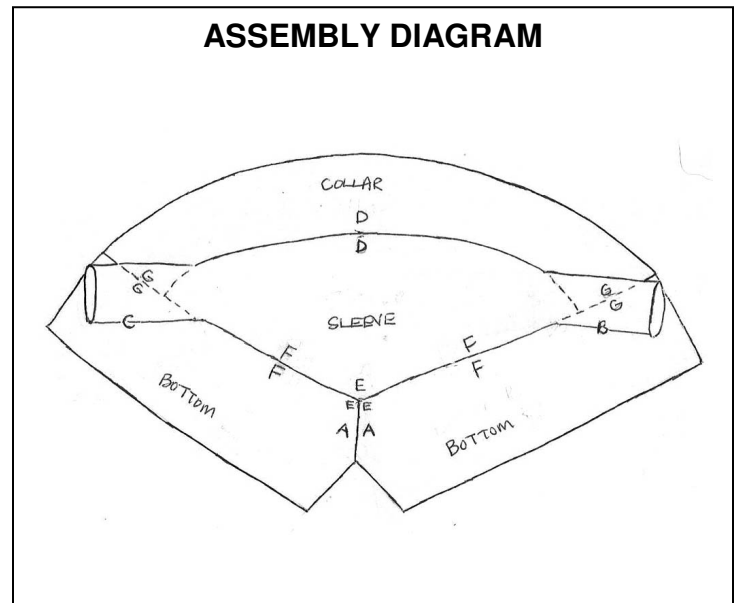
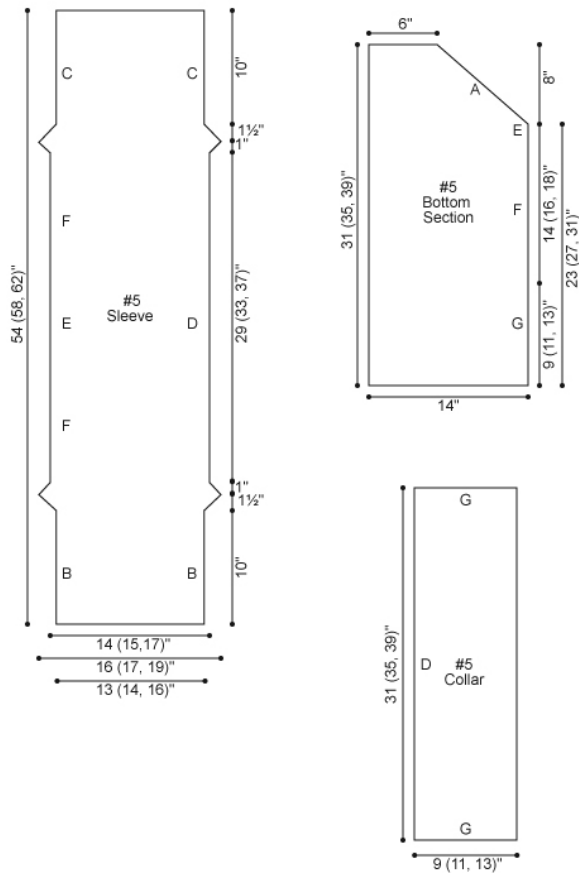
### URBAN RENEWAL, Tahki Yarns Terra Collection 7<sup>th</sup> Edition and RIPPLE Leaflet

#### Warren 2-Way Jacket

##### FINISHING REVISIONS & DIAGRAMS

Block pieces to measurements. Sew Bottom Sections together along decreased edge (A) for center BACK seam (E). Sew SLEEVE seam closed from cast-on edge to first marker (B) and from bind-off edge to second marker (C). Sew one long edge of Collar to one long edge of SLEEVE (D). Center BACK seam (E) along opposite long edge of SLEEVE and sew together (F), leaving first and last 9 (11, 13)" unsewn for Fronts (G). Sew unsewn Fronts to cast-on and bind-off edges of Collar (G). Weave in ends.

TERSS11-005 Warren 2-Way Jacket



## 2011 kits

### Yolanda Shawl (Kit Only)

RIGHT SIDE PANEL, after Row 19, add Rows 20, 22, 24, 26, 28, and 30 Purl.


### Elsa Scarf (Retailer SSP Kit Only)

Rows 66-85 should be Rows 66-87; change to Rows 101-136: Rep Rows 99 and 100; Rows 137-147: Knit...

## 2010 booklets, e-patterns and editorials

### ROUND MIDNIGHT, S. Charles Collezione Fall/Winter 2010

#1 Cassandra Jacket, Corrections to Charts (symbol for RT is missing from key)

 RT: Knit into front of second st, then knit first st, slipping both sts from left-hand needle together.

The identification of Charts C and D are reversed (the one marked C should be D, and vice versa).

### #16 Rosemary Vest

Neckband (WS) should be Beg P1, k1 rib and Stripe Pattern...

## 2010 booklets, e-patterns and editorials

### SOFT SCULPTURE, Tahki Yarns Terra Collection 6<sup>th</sup> Edition

#### #1 Marble Hat & Scarf

**PATTERN STITCHES**, Brioche Rib Row 2 should be K1, \* yo, slip 1, k2tog; rep from \* across to last st, k1.

After 1<sup>st</sup> Dec Row (in both Hat & Scarf), Next Row should be K1, \* yo, slip 1, k2tog; rep from \* across to last st, k1.

Beg with Row 2, work in Brioche Rib...

### Filatura Di Crosa CINCILLA (Rivista 15 – Fall/Winter 2010)

#### #5 Stole with Ribbon

**PATTERN STITCHES**, Stitch and Stripe Sequence last sentence should be:

Repeat Rows 1-20 (1-22, 1-24, 1-26) for Stitch and Stripe Sequence

**FINISHING**, omit last sentence and replace with: Cut ribbon in half and sew one end of first half to center of gathering of either stole end and one end of second half to center of gathering of opposite stole end.

### Filatura Di Crosa GOLDEN LINE 2<sup>nd</sup> Edition (Rivista 17 – Fall/Winter 2010)

#### #6 Fan Stitch Ruffled Jacket

**RIGHT FRONT BAND** and **LEFT FRONT BAND**, After Repeat last 2 rows 6 more times, add:

**Change to St st and work 2 rows.** Then Bind off all sts.

### Filatura Di Crosa ZARA FAMILY 2<sup>nd</sup> Edition (Rivista 18 – Fall/Winter 2010)

#### #25 Swing Jacket

In both Gauge and Note (N.B.), the entire garment is worked **holding 2 strands of Zara together with 1 strand of Baby Kid Extra**. The following corrections need to be made to the amount of yarn needed:

Small: Zara 20 balls & Baby Kid Extra 5 balls

Medium: Zara 22 balls & Baby Kid Extra 5 balls

Large: Zara 24 balls & Baby Kid Extra 6 balls

X-Large: Zara 25 balls & Baby Kid Extra 6 balls

### VOGUE KNITTING Early Fall 2010

#### #1 Lutz & Patmos Sweater (pp. 54 & 120) in Tahki Yarns MONTANA Yarn amounts are incorrect

The correct amounts should be 10 (12, 13, 15) hanks of Tahki Yarns Montana 100% wool (3.5oz/100g; 130 yd/120m) in #003 light gray

### SEASIDE TWEED, Tahki Yarns Tweed Collection 4<sup>th</sup> Edition

#### #11 Amagansett Cabled Shawl

Cable II, Row 12 should be K3, p9, k3.

#### #3 Bridgehampton Jacket

On BACK, LEFT FRONT & RIGHT FRONT, after cast-on, the first row should be **Beg and end with p1**, work...

BACK, Inc Row 2 (RS) Work **13** sts...

**LEFT FRONT**, end of Shape Armhole section, should be **AT SAME TIME, when Armhole measures 5 (5½, 6½, 7)"**, end with a RS row.

**RIGHT FRONT**, Row 1 (RS) should be Work 7 sts in K1, p1 rib as established, beg with Row 1, work Cable I over 7 sts, Cable II over 7 sts, Cable I over 7 sts, Texture st over 3 sts, Cable III over 14 sts, [Cable II over 7 sts, Cable I over 7 sts] 1 (2, 2, 3) time(s), Cable II over 7 sts for 1 (0, 1, 0) time, Texture st over 3 sts, p1 for selvedge st.

Work as for LEFT FRONT until piece measures 14" from beg, end with a WS row.

**Shape Lapel Next Row (RS)** Cast on 15 sts for Collar at beg of row, working across new and rib sts, beg on same row of other cables across row, work Cable II over 7 sts, Cable I over 7 sts, Cable II over 7 sts, work in patterns as established to end of row – 85 (92, 99, 106) sts. Work as for LEFT FRONT, reversing shaping and Pocket placement.

**SLEEVES, Shape Cap** should be bind off 5 (8, 9, 13) sts... - 48 (52, 56, 60) sts rem. Dec 1 st each side every other row 8 (10, 12, 14) times – 32 sts rem.

**FINISHING**, After Sew edges of Rib to FRONT, add Sew POCKET LININGS to WS of FRONTS.

**Collar**, add this **NOTE: Sts for Collar are picked up on WS of Jacket so RS of Collar faces out when folded over.**

Next Row (WS) should be K2, p4 for 0 (0, 1, 1) time, k6, p8, k6, [p4, k3] 4 times, k3, p8, k6, [p4, k3] for 0 (0, 1, 1) time, k2. Row 1 (RS) should be P2... **Cable I** over 7 sts for 0 (0, 1, 1) time...

Last Paragraph should be: Fold Collar in half to RS of Jacket and sew bind-off edge along RS of Neck edge. Sew sides of Collar closed. Fold 1" to WS along front edges of each FRONT and sew in place. Half of rib section on LEFT FRONT will still be on RS while all of rib section of RIGHT FRONT will be folded to WS. Keeping front edges straight, sew cast-on edges of FRONT Lapel to WS of FRONT and sew in place. Continue to fold and sew Lapel to WS. Sew bind-off edge of Lapel closed. Sew 1" along side edge of Collar to bind-off edge of Lapel. Lapel can be folded over and worn as a notched lapel. Sew in Sleeves. Sew side and Sleeve seams. Weave in ends.

CORRECTED SCHEMATICS on next page:

## 2010 booklets, e-patterns and editorials

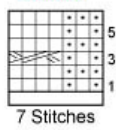
### SEASIDE TWEED, Tahki Yarns Tweed Collection 4<sup>th</sup> Edition (cont)

#### #3 Bridgehampton Jacket

##### Stitch Key

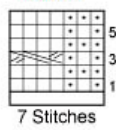
- = K on RS, p on WS
- ◻ = P on RS, k on WS
- = 2/1 LPC
- = 2/1 RPC
- = 2/2 LC
- = 2/2 RC

Cable II



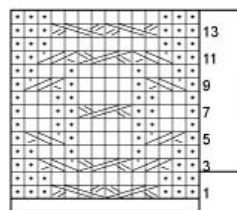
7 Stitches

Cable I



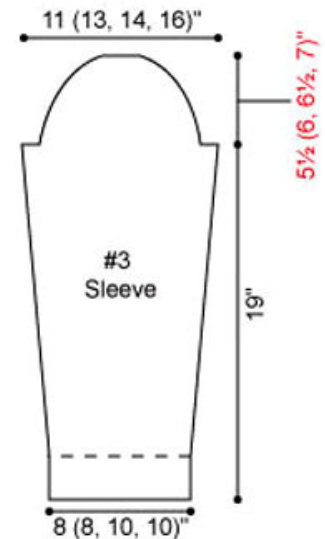
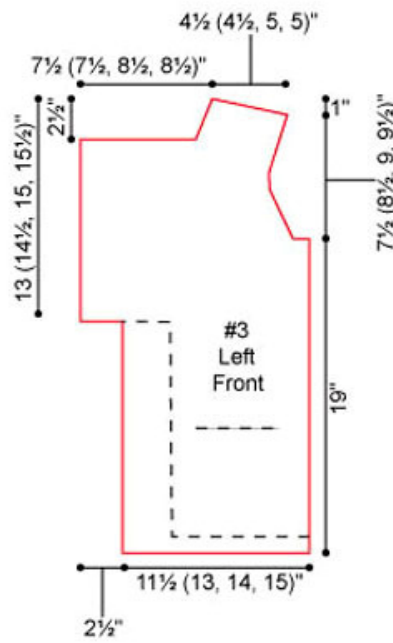
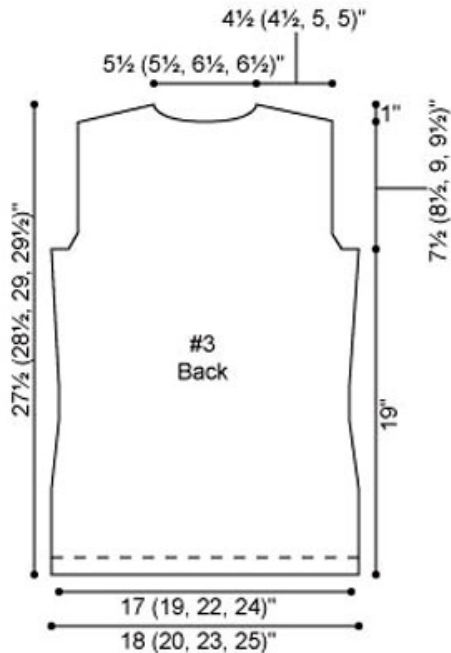
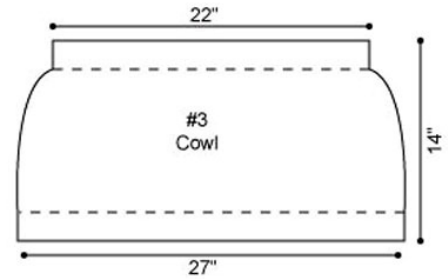
7 Stitches

Cable III



14 Stitches

12-Row Repeat



## BRIGHT KNITS BIG CITY, S. Charles Collezione Spring/Summer 2010

#2 Kathy Cocoon, **Right Sleeve**, after cast-on and set-up of Stripe Pattern: Work even for **24 rows**.

#12 Heidi Tee, **SLEEVE** Section was missing from pattern

Cast on 49 (**53**, 53, **57**) sts; beg k1, p1 rib. Work even for 3 rows. Change to Twisted Rib Pattern from Chart A; work even until piece measures 1 1/4" from beg, end with a WS row.

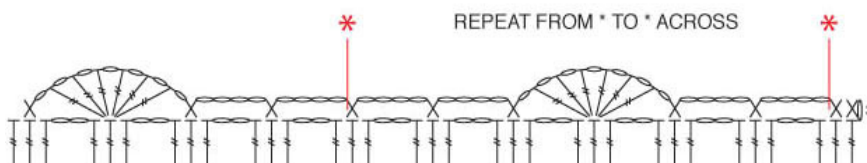
**Shape Sleeve (RS)** Inc 1 st each side this row, then every 10th (**10th**, 8th, **8th**) row 5 (**6**, 7, **8**) times – 61 (**67**, 69, **75**) sts. Work even until piece measures 8" from beg, end with a WS row.

**Shape Cap (RS)** Bind off 3 (**5**, 6, **8**) sts at beg of next 2 rows, 2 sts at beg of next 2 rows, dec 1 st every other row 3 times, every 4th row 5 (**6**, 6, **7**) times, then every other row 3 times, bind off 2 sts at beg of next 2 rows, 3 sts at beg of next 2 rows, then 4 sts at beg of next 2 rows. Bind off rem 11 sts.

## CITY CROCHET, Tahki Yarns Spring/Summer 2010

#1 Barcelona Shawl

**Row 3** Ch 1, work 1 sc each in first 2 tr, \*[ch 4, skip next (tr, ch 2, tr), **sc in next tr**] twice, ch 1, skip next (tr, ch 2, tr), [tr, ch 1] 6 times in next tr, skip next (tr, ch 2, tr), sc in next tr, [ch 4, skip next (tr, ch 2, tr), sc in next tr] twice; rep from \* across, turn. **Illustration of Row 3 (for further clarification)**



**Row 4** Ch 1, sc in each of first 2 sts, \*ch 4, sc in next sc, ch 2, [**tr, ch 2**] in each of next 2 tr, [tr, ch 2] twice in each of next 2 tr, [**tr, ch 2**] in each of next 2 tr, skip next ch-4 sp, sc in next sc, ch 4, sc in next sc; rep from \* across, turn.

## 2010 booklets, e-patterns and editorials

### CITY CROCHET, Tahki Yarns Spring/Summer 2010

#### #3 Amsterdam Tee

**Yoke Row 1:** Sc in 2<sup>nd</sup> ch from hook, sc in each of next 19 (19, 23, 27) ch, \*2 sc in each of next 2 ch, place marker between 2<sup>nd</sup> and 3<sup>rd</sup> sc of last 4 sc for center back\*, sc in each of 54 (54, 62, 68) ch, rep from \* to \* once for center front, sc in each of next 34 (34, 38, 40) ch, turn – 116 (116, 132, 144) sc.

**Body Rnd 3:** Ch 3, \*dc3tog in next st, ch 2, skip next 2 sts, rep from \* around, slip st in top of beg ch-3 to join – 60 (68, 72, 78) ch-2 sps.

### GARDEN VARIETY, Tahki Yarns Cotton Classic/Cotton Classic Lite 4<sup>th</sup> Edition

#### #3 Cotillion Shell (in Key for Cable Charts)

C4F: Slip 2 sts to cn and hold in front, k2, k2 from cn.

C4B: Slip 2 sts to cn and hold in back, k2, k2 from cn.

### Loop-d-Loop by Teva Durham E-Patterns Spring/Summer 2010

**Ludlow Top (E010-011), Bell Stitch – (worked in rounds) Rnds 1-8 are correct, then add:**

Remove marker, slip 1, replace marker (beginning of round is centered between the 2 decreases of round below.

**Rnd 9** \*K4, yo, k1, yo, k4; rep from \* around.

**Rnd 10** \*K4, p3, k4; rep from \* around.

**Rnd 11** \*K4, yo, k3, yo, k4; rep from \* around.

**Rnd 12** \*K4, p5, k4; rep from \* around..

**Rnd 13** \*K4, yo, k5, yo, k4; rep from \* around.

**Rnd 14** \*K4, p7, k4; rep from \* around.

**Rnd 15** \*K4tog, k7, k4togtbl; rep from \* around.

**Rnd 16** Purl.

Repeat Rnds 1-16 for Bell Stitch.

**BODY:** Replace Beg with Rnd 1, rep Rnds 1-8 twice... with **Beg with Rnd 1, work Rnds 1-16.**

**SLEEVE:** Row 13 should be K1, \*k8, yo, k5, yo; rep from \* to last 9 sts, k9.

### URBAN ORGANICS, Tahki Yarns Terra Collection 5<sup>th</sup> Edition

#### #3 Fairmount Directional Cocoon

##### BACK AND FRONT (both alike)

Omit Inc Rnd 2 as written and replace with:

**Inc Rnd 2** [M1, k1] around – 32 sts.

**Set-Up Rnd** [Beginning with Rnd 4, p4 for Striped st, pm, k4 for Cable st, pm] 4 times – 32 sts.

**#6 Tuileries Cardigan, Left Front Row 1 (WS) Purl** to last 3 sts, k1, p1, k1...

#### #12 Tivoli Swing Vest

**BACK, Row 10** K7 (7, 8, 9), purl across all sts, **working in wraps.**

**Left Front, After Dec Row...38 (42, 44, 50) sts rem.** [Rep Short Row Wedge 1. Work even for 1 row.] 18 (19, 22, 25) times. **Work 1 row.**

**Right Front, Row 1 (WS) P 35 (35, 40, 45), k7 (7, 8, 9)... end with a WS row.**

## 2009 booklets

### MODERN LIVING, S. Charles Collezione Fall/Winter Collection

#### #4 Michelle O Cardigan

##### BACK

Using smaller needles, cast...**inc 2 sts evenly spaced across last row – 84 (96, 108) sts.**

**(WS)** Change to larger needles. Work in St st across first 7 (11, 15) sts, work Cable Panel across **24 sts**, work St st across 22 (26, 30) sts, work Cable Panel across **24 sts**, work in St st across 7 (11, 15) sts...**Note: After working row 4 of Cable Panel... 88 (100, 112) sts.**

##### LEFT FRONT

Using smaller needles, cast on...**inc 1 st in center of last row--64 (70, 76) sts.**

**(WS)** Change to larger needles. Work in St st across first 20 (24, 15) sts, work Cable Panel across **24 sts**, work in St st across 10 (12, 14) sts, work in rib to end...

**Note: After working row 4 of Cable Panel, there will be 66 (72, 78) sts.**

CHART – Please note that the numbers on the Cable Panel chart should be switched, that is, the odd numbers on the left-hand side and the even numbers on the right-hand side. The first row should be a WS row so that the cable twists are worked on the RS.

#### #7 Rowling Wrap

PLEASE NOTE that the photograph shows Fourth Triangle Panel in front.

**Cable Panel A:** Rows 9 and 11: P2, k6, p2.

**Cable Panels B and C** should be **panels of 8** (not 10).

**Fourth Triangle**, at end of **Row 45 – 27** sts rem (not 29); at end of **Row 46 – 26** sts rem.

#### #13 Oprah Coat

**SLEEVES, LEFT HALF, Shape Sleeve (WS)** should be Slip 1, k2tog, work to last st, M1, p1.

## 2009 booklets and e-patterns

### NATURAL LANDSCAPE, Tahki Yarn Terra Collection 4<sup>th</sup> Edition

#### #3 Cocoon Cardigan/Vest

Clarification of (k3tog, yo, k3 tog) – knit 3 sts tog, leaving them on the left-hand needle, yo, then knit the same 3 sts tog again, slip to right-hand needle.

#### #4 Luna Raglan Shrug

**SLEEVES**, after cast-on, Work in garter st, dec 1 st each side **every 4<sup>th</sup> row**...

### DANCING ON AIR, Filatura Di Crosa SUPERIOR 2<sup>nd</sup> Edition

#3 Giselle Scarf, **Row 4** K18, p3, yo, p4, p2tog, ssp, p4, yo, p3, k2.

### SIGNATURE STYLE, Loop-d-Loop by Teva Durham Volume 5

#### #2 Branching Cable Cardigan

**BODY** After Row 1, next paragraph should begin **Slipping the first stitch of every row**...

#### #12 Crossed Ribs Vest

3/1LPC should be Slip 3 sts onto cn...

**BODY** Work in **K3, P3** rib...

### Filatura Di Crosa CHIC COLLECTION (Brown Cover - #2) Fall/Winter 2009

#### #4 Cream Entrelac Jacket

**SHAPE RAGLAN**, After Row 20, the instructions should be:

**Size M Only, Row 21** K2tog.

**Sizes L and XL Only, Row 21** K 1(2), k2tog. **Row 22** P 2 (3), p2tog next st and first st from holder.

**Size XL Only, Row 23** Sl1, k, k2tog. **Row 24** P1, p2tog next st and first st from holder.

**All Sizes** Bind off remaining st.

**SLEEVES, Shape Sleeve:** next line should be 4<sup>th</sup> (2<sup>nd</sup>, 2<sup>nd</sup>, 2<sup>nd</sup>) Pattern Row.

**7<sup>th</sup> (5<sup>th</sup>, 5<sup>th</sup>, 5<sup>th</sup>) Pattern Row**, After the cast-on, the next sentence should read Knit across these sts to last st and k2tog last st with first st from holder.

### Filatura Di Crosa Superior Crochet

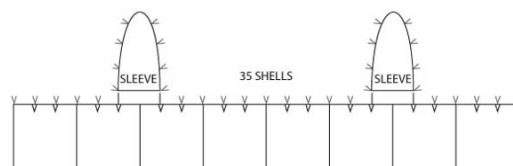
#1 Floral Circular Shawl **Rnd 10** With RS facing...[2 sc, ch 8] in each **ch-11** lp around...

#### #8 Lace Motif Cardigan

**FIRST MOTIF (no joins), Rnd 3** Slip st...\*(dc, ch 7, dc) in next ch-1 sp (corner), **ch 4\*\***...

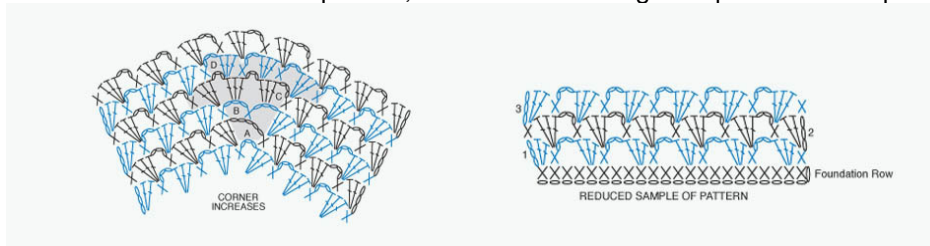
**YOKE, Row 1** With larger hook... Working across long edge of body piece, ch 4 (counts as dc, ch 1), dc in same sp, ch 5, (V-st, ch 5) in each of next **4 (5, 6, 6)** V-st positions...

Chart below is specifically for Size SMALL, but may offer assistance in finishing/armhole placement of all sizes:



### Tahki Yarns "Hooked on a Feeling" Crocheted Shrug (E-Pattern)

Though there is not an error in the pattern, the chart below might help execute the pattern more easily:



### Filatura Di Crosa Spring/Summer 2009

#### #12 New Smoking Ribbed Vest

Lacy Rib Stitch

**Row 1 (RS)** \*K2, yo, p2tog; rep from \* to last 2 sts, k2.

**Row 2** \*P2, yo, p2tog; rep from \* to last 2 sts, p2.

## 2009 booklets and e-patterns

### S. Charles Collezione Spring/Summer 2009

#### #15 Nepal Wrap Vest

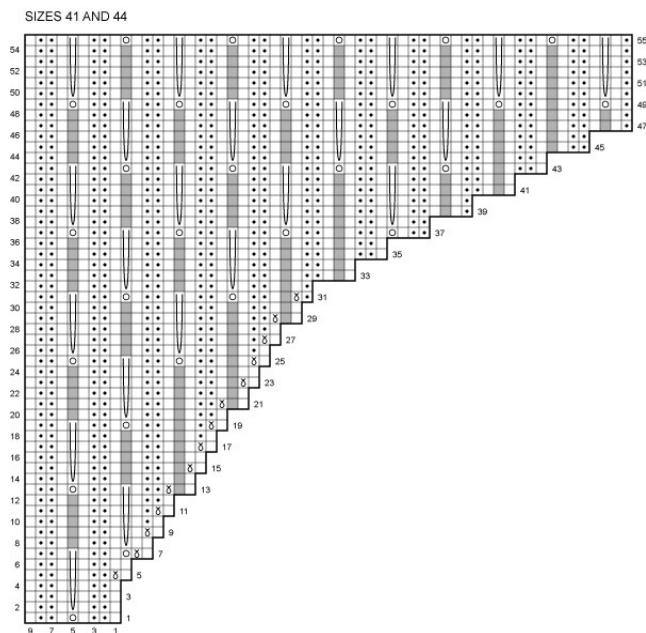
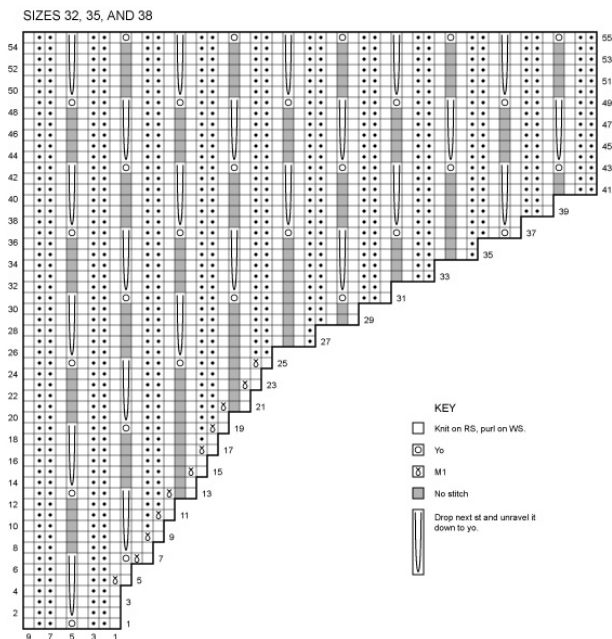
This pattern should be rated **Intermediate** rather than Easy.

**PATTERN STITCHES, Openwork Pattern:** Set-Up Row is given so you can to work gauge swatch correctly. It is NOT included in written pattern for RIGHT FRONT, as first 12 rows of RIGHT FRONT are written out. For RIGHT FRONT cast-on's, work cast-on's at **end** of every other WS row, **not at beginning**, as follows:

**(WS)** Cast on 3 sts at end of this row, then every other row...

**NOTE:** If you prefer, you may work across the WS row and then cast on 3 sts at beg of following RS row. Changing the cast-on's from beg to end of the row is the only actual correction for this pattern. The rest of pattern is correct as written. However, if you have difficulty working shaping and stitch pattern at the same time, you may follow shaping chart below for your size.

Note: Not all cast-on rows are given. Work rem cast-on rows same as 1st 8 cast-on rows.



### Tahki Yarns Cotton Classic 3<sup>rd</sup> Edition

#### #10 Sailor-Collar Cardigan

**PATTERN STITCHES,** Little Shell stitch, **Row 3** K2, \* yo, p1, p3tog, p1, yo, k2; rep from\* ...

### Tahki Yarns Terra Collection 3<sup>rd</sup> Edition

#### #5 Jeans Lace Panel Cardigan – LEFT FRONT,

##### Begin Totem Pole Lace Panel

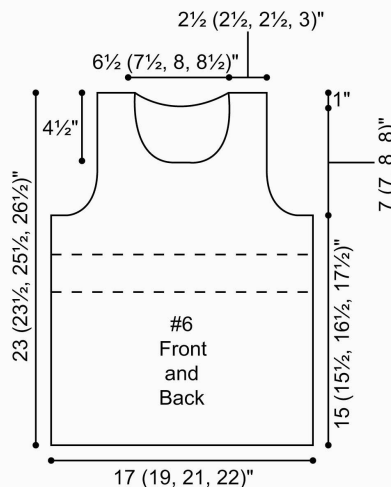
**Row 1 [Set-Up Row (RS)]** K12 (13, 15, 18), p2, k14, p2, k11 (12, 14, 17).

**Row 2 (WS)** Knit the knit sts and purl the purls sts.

**Row 3** K12 (13, 15, 18), work row 2 of Totem Pole Lace pat, k11 (12, 14, 17), k4 for garter st border. Continue to work pats as established until piece measures 12", end with WS row.

#6 Jeans Empire Tunic – schematic (right) missing from booklet

TERSS09-6 Empire Tunic/Tank



## 2008 booklets

### Filatura Di Crosa Fall/Winter 2008

#### #2 Aliseo Classic Vest

**FINISHING** Block pieces to measurements. Sew shoulder seams (do not sew side seams).

**Add Armhole Bands** With RS facing, pick up and knit 76 (78, 82, 86) sts around armhole edge. Work in k2, p2 rib for 1". Bind off in rib. Sew side seams.

### Filatura Di Crosa Superior Leaflet 2008 (out of print)

#### #5 Romantic Blouse

**Length should be:** 25½ (26½, 27½, 28½)" / 65 (67.5, 70, 74.5)cm

**BACK** Using larger needles, cast on... Work even for **10 rows**.

**Shape Waist, 2<sup>nd</sup> RS row** Inc 1 st each side this row, then every 10 (10, 8, 8) rows... work even until piece measures 18 (18½, 19, 19½)"...

**SLEEVES** Using larger needles, cast on **36 sts**...

**Shape Sleeve (RS)** Inc 1 st each side this row, then every 10<sup>th</sup> (8<sup>th</sup>, 6<sup>th</sup>, 6<sup>th</sup>) row 9 (12, 15, 17) times... Work even until piece measures 16½ (16¾, 17¼, 17½)"

### Filatura Di Crosa Merino Collection

#10 Tonal Braided Scarf: Materials list for **ZARA PLUS**: color number for **light blue is #400**

### Loop-d-Loop by Teva Durham, Volume 3

#### #14 Lace Trim Cardigan

BODY, Divide for Fronts and Back:

Next Row (RS) Work 24 (**26**, 29, **31**, 34) sts and place onto holder [**NOTE: this is a decrease row so only 23 (25, 28, 30, 33) sts rem for Right Front**], bind off...work to end.

You should have 23 (25, 28, 30, 33) sts after decs which will be reduced to 11 (**13**, 16, **18**, 21) sts with 9 more Neck decs and 3 Armhole decs.

#### #15 Reversible Quilted Vest

Materials list for **FERN**: color number for blue is **#06**; **SHALE**: color number for blue is **#09**

### Tahki Yarns Terra Collection 2<sup>nd</sup> Edition FW2008

#### #4 "Bobble" Capelet

**PATTERN STITCHES**, Texture Stitch **Remove Row 12** Knit the knit...; follow **Row 12** Purl.

### Tahki Yarns Savoy Leaflet 2008

#3 Lacy Wrap: Pattern section marked SCARF should be marked **WRAP**

### Tahki Yarns Taos Leaflet 2008 (out of print)

#1 Easy Scarf: Materials list indicates that **#19 needle** is 35mm; it should be **15mm**

#2 Split-Collar Pullover: Materials list for **TAOS** should be **color #007 birch**

### Filatura Di Crosa Spring/Summer 2008

#### #22 Keyhole-Back Sweater

Materials list for DUSK should be 5 (6, 7, 8) balls in **color #1 wheatfields (A)** and 2 (2, 3, 3) balls in color **#3 woods (B)**

### Filatura Di Crosa Baby Brights

#8 Diagonal Stripe Blanket: Materials list for BAMBÌ should be **3 balls of each color**

### Tahki Yarns Spring/Summer 2008

#### #2 Scalloped Tank

MB (make bobble) [**K1, p1, k 1, p 1, k1**] into next stitch (5 sts made).

## 2008 booklets

### Tahki Yarns Spring/Summer 2008

#### #3 Textured Short-Sleeved Cardigan

Pattern Stitch for Left Front and Right Front should end with:

Repeat Rows 7-18 for pattern stitch.

Finishing/Neckband: With RS facing, work 10 sts from right front neck holder as follows: (k1, p1) 2 times, **k6**.

...Work 10 sts from left front neck holder as follows: **k6, (p1, k1) 2 times** – 91 (93, 93, 97, 101) sts.

#### #4 Textured Jacket

Pattern Stitch for Sleeves Row 3: K1 (k2, yo, k2, p4, p3tog, **p4**, k2, yo, k1) 3 times, k2.

#7 Dream Shrug: Materials list for DREAM – use **triple** strand throughout.

### Terra Collection by Tahki Yarns Spring/Summer 2008 (out of print)

#### #1 One-Button Cardigan

Back and Left Front: Shape Armhole(s) Continue to work in **Seed Pattern st** until armhole measures...

#8 Cabled Vest: Materials list for SKY should be **color #03** cherry blossom

#### #10 Side-to-Side Garter Stitch Vest

Join for Right Shoulder - Next Row: (WS)...Work in Garter st for 0 (**4, 8, 8**) rows.

Right Arm - Change to St st. Next Row (RS) Bind off 7 sts...first marker, **ssk**, k2, **k2tog**, knit to end of row. After Decrease Row, add **Purl 1 row**.

### Loop-d-Loop by Teva Durham Volume 2, Spring/Summer 2008

#### #1 Mesh & Rib Short-Sleeve Pullover

Join for Yoke...Next Row: (WS) ...across 18 (24, 27, 30, 33) sts, p2, k2, p2, **place marker**, work Row 2 across 46 (54, 58, 66, 70) sts of Sleeve, p2, k2, p2, **place marker**, work Row 2 across 60 (66, 72, 78, 84) sts of Back, p2, k2, p2, **place marker**, work Row 2 across 46 (54, 58, 66, 70) sts of Sleeve, p2, k2, p2, **place marker**, work Row 2 across 18 (24, 27, 30, 33) sts, (p2, k2) twice, p2.

### Tahki Yarns Tweed Collection 2<sup>nd</sup> Edition

#### #7 Striped Earflap Hat with Braids

Clarification of (k3tog, yo, k3 tog) – knit 3 sts tog, leaving them on the left-hand needle, yo, then knit the same 3 sts tog again, slip to right-hand needle.

## 2007 booklets and editorials

### Vogue Knitting Holiday '07

#### #7 Cable and Rib vest (photo on pg 68, instructions begin on pg 105)

Back – Foundation row (WS) P1 (sel st), [k1, p1] 1 (2, 3, 4) times, k1, \*p4, [k1, p1] twice, k1; rep from \* 4 times more, p4, [k1, p1] 1 (2, 3, 4) times, k1, p1 (sel st).

Waist shaping

Change to smaller needles. Next row (RS) K1, [p1, k1] 2 (3, 4, 5) times, \*p1, k2tog, [p1, k1] 3 times; rep from \* 4 times more, p1, k2tog, [p1, k1] 2 (3, 4, 5) times.

### Filatura Di Crosa Fall/Winter 2007 (booklet out of print)

#### #5 Tibet Jacket - Right and Left Fronts Pattern Stitch

Row 3: K1, \*yo, k2tog, k2; repeat from \*....

Work even in pattern, keeping 5 sts in garter stitch at front edge.

#### #10 North Pole Pullover

Wave Pattern Row 5: K3, LT, k4, LT, **k2**. Repeat rows 1-12 for Wave Pattern.

#22 Alpallite Hat, Neck Warmer, Fingerless Gloves Yarn amounts should be **4-5 NOT 2 balls**.

### Filatura Di Crosa Fall/Winter 2007 (booklet out of print)

#### #30 Zara Blue Cabled Pullover (also given as a Free Pattern on the Website)

Back and Front: Cast on 184 (206, 228, 250) sts. ...Work even until Row 135 of Large Cable is complete – 136 (152, 168, 184) sts.

Shape Armholes: Continuing in pattern, bind off ... – 116 (126, 136, 146) sts rem.

#### #34 Superior Lacy Sampler Scarf (After rows Rows 13 and 17)

Row 20 Purl. Rep rows 1-20 for Diamond Mesh

## 2007 booklets and editorials

### S. Charles Collezione Fall/Winter 2007

#1 Long Stripe Cape: BACK Rows 1 & 3: (WS) Knit.

#13 Dynasty Stitch Sampler Pullover: Gauge is given over pattern #2.

#14 Dynasty Sleeveless Cowl Delete Special Stitches & Pattern Stitch - do not refer to this pat.

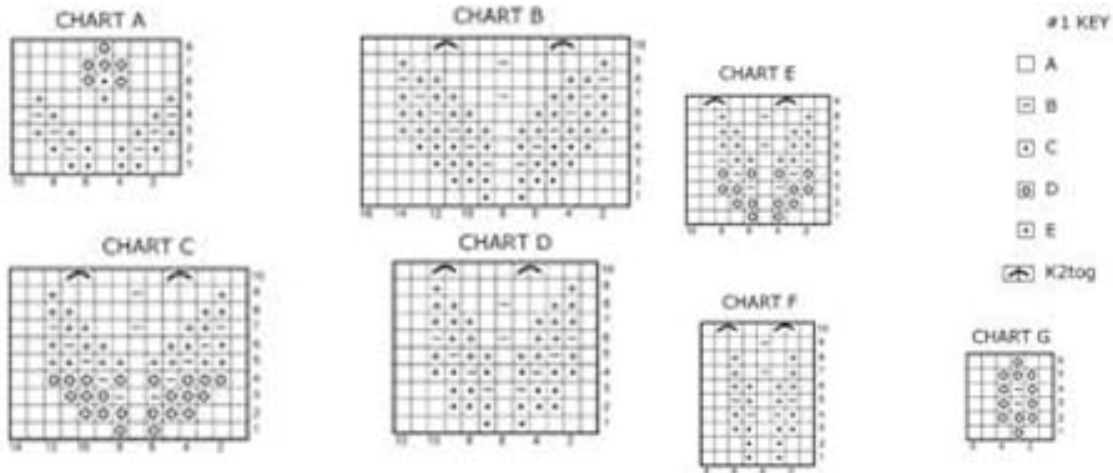
### Tahki Yarns Fall/Winter 2007

#1 Taos Buttoned Cardigan

LEFT FRONT Shape Neck **Remove the final line** [(RS) Work 2 rows even. Bind off all sts.]

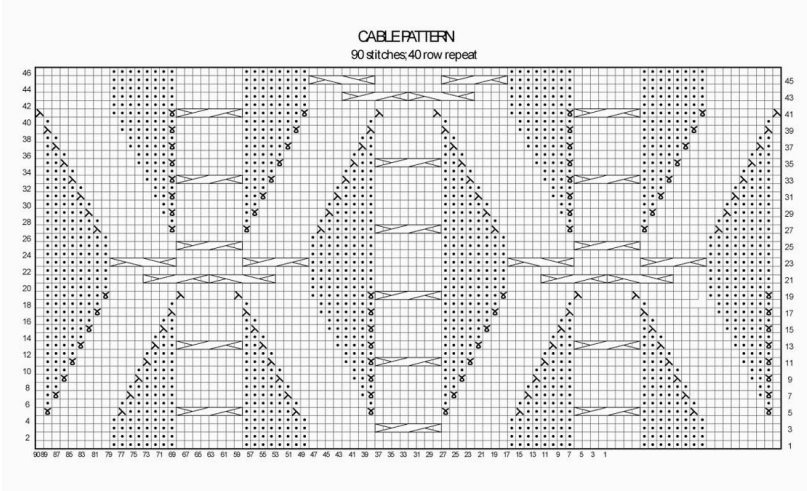
### Tahki Yarns Tweed Collection 2007 (booklet out of print)

#1 Donegal Tweed Yoke pullover [complete charts]



### Tahki Yarns – Spring/Summer 2007

#1 Java Cable Vest - Note the addition of decreases on rows 19 and 41



### Tahki Yarns – Spring/Summer 2007

#8 Torino Lace Stitch Cardigan

BACK, First RS Row: should end with **End with a right-side row.**

Next Row should be (WS) Change to smaller needles...

#10 Dream & Star Waist-Tie Cardigan

RIGHT FRONT - after "At beginning of right-side rows, **AT THE SAME TIME**, after 18 rows have been worked, work buttonhole as follows, k2, yo, k2tog, work to end.

Rep every 18 rows until 5 buttonholes have been made.

FINISHING...after weaving in ends. Sew on buttons.

#21 Siena & Java Side-to-Side Cardigan: Stripe sequence is over 28 rows not 16 rows.

## 2007 booklets

### Filatura Di Crosa Spring/Summer 2007

#### #10 Malva & New Smoking Crew Cardigan

Left Front Begin Pattern (RS)....

Work in Garter st to end and when piece measures 7", continue in St st only.

### Crochet 2<sup>nd</sup> Edition 2007

#### #11 Cosmos Lace Vest

RIGHT FRONT AND LEFT FRONT, Row 4 (dec) should begin **Ch 3 (counts as dc)**.

The pieces should be worked in this order: **LEFT FRONT, BACK, RIGHT FRONT**.

After Fastening off the RIGHT FRONT, add **Sew FRONTS to BACK at shoulders**.

#### #18 Cotton Classic Lacy Tunic

MOTIF (make 16) Ch 4, slip st in first ch to join in ring.

**Rnd 1** Ch 4 (counts as dc, ch 1), (dc, ch 1) 7 times in ring, slip st in 3rd ch of turning ch to join – 8 ch-1 spaces.

**Rnd 2** Slip st in first ch-1 space, ch 3 (counts as tr), tr3tog in same space, ch 4, (tr4tog, ch 4) in each ch-1 space around, slip st in first tr3tog to join – 8 ch-4 loops.

ASSEMBLE MOTIFS: Leaving center front and center 7 (8, 9, 9)" at back neck unjoined as indicated by bold lines, join Motifs following Construction Diagram, with rows of sc as follows: With WS of 2 Motifs facing, working thru double thickness, join yarn at first corner sc, ch 1, sc in corner sc, \*work 4 sc in next ch-4 loop of both Motifs, sc in next sc; rep from \* across to next corner sc. Continue to join Motifs in 4 rows of 4 Motifs. Fasten off.

### S. Charles Collezione Spring/Summer 2007

#### #12 ZaZa & Victoria Side-to-Side Vest

Shape Armhole: Continue to work for 1½", end with a WS row.

Continue in stripe pat .... 4 rows garter st with F (center stripe), then mirror image stripes as shown in photo and work until back measures.....

#### #13 Muse V-Neck Tunic

Lower Bodice: Using 2 strands of yarn, knit **8** rows. Bind off.

#### #19 Ceylon One-Button Cardigan

BACK, Shape Armhole

Last line should read **Bind off all stitches** (not Place sts on a holder).

## 2006 booklets and editorials

### Filatura Di Crosa Fall/Winter 2006

#### #9 Short Jacket

Finished bust 35½ (41, 47, 52½)"

#### #12 Murano Pullover with Cowl

Cowl is missing: **Cast on 33 sts. Work in Seed st for 22". Bind off. Sew back seam.**

### S. Charles Collezione Fall/Winter 2006

#### #20 Slip Stitch Jacket

Pattern I – Diagonal Stripe

Row 1 ...\*sl 2 wyib,...

Row 2 ...\*sl 1 wyif,...

### Tahki Yarns Fall/Winter 2006

#### #1 Bunny Striped Cardi

Left Front, Shape Armhole

In last line of this section, **delete** end with a right-side row.

#### #6 Color Block Pullover

Gauge for sweater is 15 sts and 24 rows = 4" (10cm)

## 2006 booklets and editorials

### Accessory Collection 2006 (booklet out of print)

#### #3A Baby Tweed Fringed Hat

Row 1 (**WS**) Knit 1 row using A.

#### #33B Primo Cabled Bag

**Note** On row 1 of chart, work stitch noted as 5 (p5) by inc 4 sts into one st – 5 sts total.

#### #41 Donegal Tweed Dog Sweater

**Add** - Join collar and under body seam to marker placed after 90 sts.

Edging

With right side facing, using hook and B, join yarn and work 1 row of single crochet evenly around Back opening. Fasten off B. Join C; work 1 row of single crochet evenly around. Fasten off. Using yarn needle, weave in all ends. Fold Collar in half to right side of sweater.

### Crochet (Vol. 1) 2006 (booklet out of print)

#### #19 Muse Tunic

Row 1 begins **ch 6 (counts as dc)**, skip first 3 sc, **sc in next sc**, ch 3.....Row 2 missing \*....

**Row 2** Ch 1, sc in first dc, \*ch 3, dc3tog in next ch3-space, ch 1, dc3tog in next ch3-space, ch 3, sc in next dc; rep from \* across, ending with sc in 3rd ch of turning ch, turn – 11 (12, 13, 14, 15) reps.

### Filatura Di Crosa Spring/Summer 2006

#### #6 V-neck Top

Lower Body Work until piece measures **28 (32, 36)**”

#### #22 Crocheted Shawl

Fringe rows

Repeat should be as follows – \*ch 40, skip next ch-3 space, slip st in next sc, **ch 30**, skip next ch-3 space, slip st in next sc; repeat from \* across.

#28 Short Sleeve Shrug: Shape Neckband: Rows 2, 4, 6 **Knit**.

#32 Cowl Neck Pullover: Bamboo Eyelet Rib Row 4: **Purl**.

### S. Charles Collezione Spring/Summer 2006

#### #2 V-neck Kimono

**FRONTS (make 2)**

#### #9 Tank Top with Crocheted Motifs, CROCHET MOTIF

**Rnd 4** \* (Ch3, 1 sc in next ch-1 sp) 3 times, ch 6 for corner, 1 sc in next ch-1 sp; rep from \* around...

**Rnd 6** Ch 1, \*sc in each **hdc** to next corner...

### Vogue Knitting Spring Summer 2006

#### Advertorial Leaf Sweater

##### Sleeve shaping

The correction: inc 1 st each side (working inc sts into pat) every 12th (10th, 12th, 12th row 3 (11, 1, 2) times, then every 14th (0, **8th, 6th**) row 5 (0, 12, **14**) times.....

#### Advertorial Cabled Tank Top

Divide for front and back

Using 138 (158, 178) sts...

##### Next row (RS)

Bind off 36 (41, 46) sts [ $\frac{1}{2}$  back], k4, p1, k9 (12, 14) sts, pm k1, pm, k 9 (12, 14), p1, k4, p1, k2tog, place 32 (38, 42) sts just worked on holder for left bra cup [including 1 st at beg from bind off], ssk, p1, k4, p1, k9 (12, 14), pm, k1, pm, k9 (12, 14), work cable pattern to end.

**Next row (WS)** Bind off 36 (41, 46), p4, k1, p 19 (25, 29), k1, p4, k1, p1 – 32 (38, 42) sts.

**Next row (RS)** K2tog, work to first marker, M1, k1, M1, work to last 2 sts, k2tog. Continue working first and last 6 sts in Cable Pattern and inc 1 st either side of center st every other row 3 (2, 2) times more – 40 (44, 48) sts.

## 2006 booklets and editorials

### **... baby too ...**

#13 yellow hat: Row 2 and all WS rows **Purl**.

### **Baby ... Toddler**

#13 Striped Hat: Using A, Cast on **84** (88, 94, 100) sts.

First Dec Row (RS): \* **K10**, k2tog-tbl...

Second Dec Row (RS): \* **K9**, k2tog-tbl...

## 2005 booklets

### **baby ...bebe ... bambini**

#3 pink blanket

Pattern Stitch

Row 2: Purl.

**Rows 3 and 4: Knit.**

#6 cover blanket

**Changes beginning with row 7 –**

Row 7: K2, \*slip 1, k1, pssso, k3, k2tog, [k1, yarn over] twice, k1; rep from \* to end.

Row 9: K2, \*slip 1, k1, pssso, k1, k2tog, k1, yarn over, k3, yarn over, k1; rep from \* to end.

Row 11: K2, \*slip 1, k2tog, pssso, k1, yarn over, k5, yarn over, k1; rep from \* to end.

#17 Windowpane Cardigan

Windowpane Pattern Stitch

Left Front – Row 6 (wrong side)....

Dec 1 st at neck edge every row 2 times. **When same length as back**, bind off.

#18 Bowknot Cardigan

**Left Front**

Cast on 38 (40, 42, 44) sts. Work in k1, p1 rib on **31 (33, 35, 37) sts** ....

#38-41

See corrected patterns under Zarella Baby in [Free Patterns](#) section of website.

## **S. Charles Collezione Fall/Winter 2005**

#16 Asymmetrical Stitched Cardigan

Motif 2

Box pattern With orange and brown, work as follows:

**Row 1 (RS)** \*K3 brown, k3 orange; repeat from \* to end.

**Row 2 (WS)** \*P3 orange, p3 brown; repeat from \* to end.

**Rows 3 and 4** Repeat rows 1 and 2.

**Rows 5 and 6** Work 2 rows in St st with brown.

**Row 7** \*K3 orange, k3 brown; repeat from \* to end.

**Row 8** \*P3 brown, p3 orange; repeat from \* to end.

**Rows 9 and 10** Repeat rows 7 and 8.

**Rows 11-12** Repeat rows 5 and 6.

**Rows 13-16** Repeat rows 1-4.

**Rows 17 and 18** Work 2 rows in St st with orange.

Motif 4

**Row 1 (RS)** \*K2 gold, k3 orange; repeat from \* to end.

**Row 2 (WS)** \*P3 orange; repeat from \* to end.

**Rows 3-12** Repeat rows 1 and 2.

**Rows 13-14** Work 2 rows in St st with orange.

Motif 5

**Row 1 (RS)** \*K4 beige, k2 brown; repeat from \* to end.

**Row 2 (WS)** \*P2 brown, k4 beige; repeat from \* to end.

**Rows 3 and 4** Repeat rows 1 and 2.

**Row 5** \*Slip 2 sts to cn and hold to front, k2, k2 from cn (beige), k2 brown; repeat from \* to end.

**Row 6** Repeat row 2.

**Rows 7 and 8** Repeat rows 1 and 2.

**Rows 9-12** Repeat rows 5-8.

## 2005 booklets

### Filatura Di Crosa Zara & Zara Plus Fall/Winter 2005

#### #1 Cabled Tie-Front Pullover (Cover)

Scarf Row 35: - **38 sts.** Row 36: - **32 sts.**

### Filatura Di Crosa Zara & Zara Plus Fall/Winter 2005 (cont.)

#### #4 Cable Turtleneck

Back, Establish Pattern:

Row 1 (RS) [K2, **p5 (7, 9)**] for side edge; .....end [**p5 (7, 9)**, k2] for side edge

#### Pattern C – Enclosed cable

Row 15 P6, 3CNB, k3, K3CN, **3CNB**, k3, K3CN, p6.

Row 23 P2, 1CNB, k3, P1CN, p3, **3CNF, k3, K3CN**, p3, 3CNF, p1, K3CN, p3.

Rep rows 5-24 for Pattern B (Center panel).

Establish pattern Row 1 (RS) [K2, **p5 (7, 9)** .... For patt B; pm, (k1, p9, k2, p1, k1) —**row 19 of Patt A**), pm, [**p5 (7, 9)**, k2] for side edge.

#### #10 Bow Trim Pullover: Back and Front

Dec Row (RS) after 76 (86, 96) sts. Then: **Inc each end of every 6<sup>th</sup> row 5 times – 86 (96, 106) sts.** Work even .  
Finishing ...and work around in k2, p2 rib dec 1 st (k2tog – last st and first st of each piece – 4 sts decreased).

**Work even for 2”.** Bind off in rib.

#### #20 Pom Pom Trim Capelet

After pm in last rnd every 30 sts:

**\*\*Next Rnd (after marker)** K1, MB, k1, p27; rep from \* 9 times more.

**Next 2 rnds** \*K3, p27; rep from \* 9 times more. Knit 3 rnds.\*\*

After Rnd 7:

Remove marker from beg of round and place 6 markers as follows:

[pm, p9, k3, p1, k3, p9] 6 times.

**Next rnd** \*P8, T4B, p1, T4F, p8; rep from \*.

**Next rnd** \*P8, k3, p3, k3, p8; rep from \*.

Rep last 2 rnds, making zigzag by moving T4B and T4F, AT SAME TIME....

## 2004 booklets and editorials

### Tahki Yarns Fall/Winter 2004

#### #1 Oversized cabled sweater

C3BP – slip next st to cn, hold to back, k2, p1 from cn.

C3FP – slip next 2 sts to cn, hold to front, p1, k2 from cn.

### Vogue Knitting Fall 2004 Advertorial

#### Looped Edge Cardigan

Back should say – Change to St st and stripe pattern and work until....

Color C is used for Left front, Right front and collar trim – not color B (doubled).

### Tahki Yarns Cotton Classic “20 Fun to Knit Designs” Spring/Summer

#14 Mother Tank: Ruffle Stitch, Row 7: **P4**, \*ssk, k2....

#### Back and Front (both alike)

...cast on 64 (**72**, 76, 80) sts.

(RS) Beg Ruffle stitch, inc to 184 (**204**, 220, 232) sts....

(WS) inc 4 (**2**, 4, 4) sts

#15 Daughter Tank: Ruffle Stitch, Row 7 **P4**, \*ssk, k2....

#19 and #20 Mother Daughter Ponchos: Row 2: Knit the **purl** sts and purl the **knit** sts.